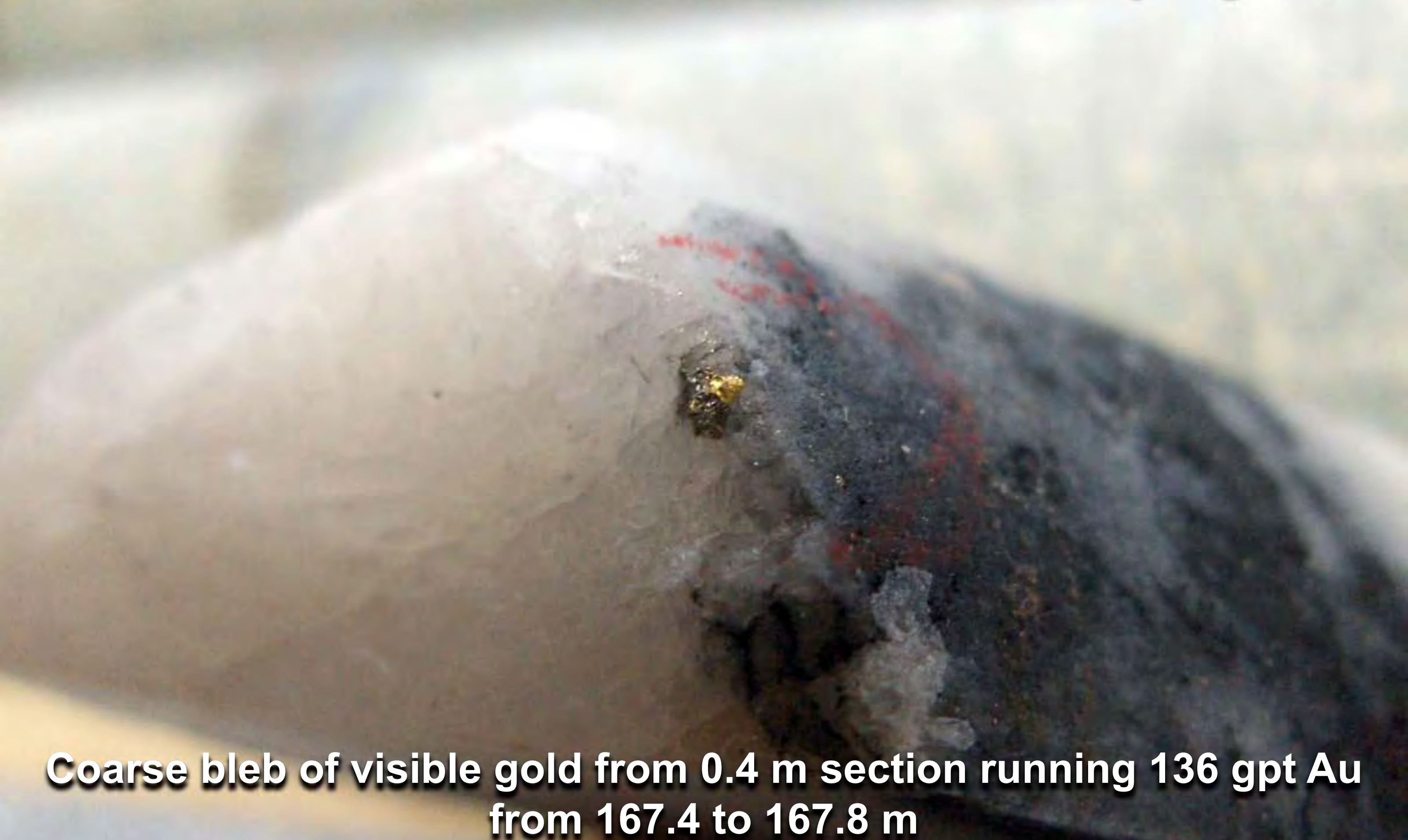


Hole VL-10-165 drill core from winter 2010 program



Visible gold specks (circled) in quartz tourmaline vein from 0.4 m section running 506 gpt Au from 167 to 167.4 m

Hole VL-10-165 drill core from winter 2010 program



**Coarse bleb of visible gold from 0.4 m section running 136 gpt Au
from 167.4 to 167.8 m**

Hole VL-10-165 drill core from winter 2010 program

VL-10-165 ↑ 167

**Multiple visible gold flecks in coarse subhedral pyrite in quartz
tourmaline vein – saw cut indicates equal distribution of gold
for sample bag versus core box**